

September Newsletter

Welcome back to a new term and a new school year. I hope your summers were happy and relaxing even if the weather did leave something to be desired!

The children have all returned settled and are already engaged in their learning, which is lovely to see. This year we are welcoming Miss Lucy Craig to our team, she has joined the Year 1 team and is completing her teacher training with us.

Please look over the information in this newsletter as it contains some important messages as well as important dates and news about coming events.

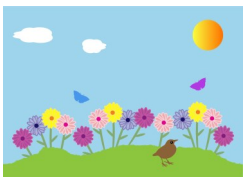
Mrs. Spicer, Headteacher



Important reminders

You recently received a copy of the Data Collection Sheet that is held on your child. This is the information we use to contact you in case of an emergency. Please check all the details, amend any details that are out of date, sign the form and return it to school by Friday, 22 September.

We will be using Parentmail as our main contact for school information. Using the system ensures that you do not miss any important information concerning school activities. If you haven't signed up you will shortly receive a text inviting you to join. If you have any questions about Parentmail please come into the school office



The Learning Garden

Those of you with children in the early Years (both Year R and nursery) will know about the changes we have made and our new name for the Early Years unit. Year R and Nursery are now collectively known as 'The Learning Garden' and there will be many more opportunities for the children to mix across the whole unit. The Learning Garden is led by Mrs Boothman and Mrs Leadbeater.

In the nursery part of the unit we are offering universal 15 hours for all children and the option to increase sessions up to 30 hours either through eligibility for free 30 hours offered by the Government or by paying for top up hours. If you wish to find out more about this or know of anyone looking for provision for 3-4 year olds please come to talk to Mrs Spicer or Mrs Boothman or look at the Nursery pages on our website.

| | |
|----------------------|---|
| Reminders | 1 |
| Safety around school | 2 |
| Charities | 3 |
| Diary dates | 4 |

Safety around school

Please remember the following safety points:-

- **NO** dogs are allowed on site
- Please **DO NOT** ride bikes or scooters around the school
- Please **DO NOT** allow children to climb on the Year 1 chalkboards and gazebo before or after school and please respect any equipment set out for the children's learning.
- Please show consideration for our neighbours when parking, **DO NOT** block garages or gates or double park and always watch out for pedestrians.



We encourage families to walk to school whenever they can, children can tell us they have walked to school and be rewarded for this through our WOW scheme. If you are unable to walk but can park a little way from the school gates and walk for around 5-10 mins from the car they can still record this as having walked)

Smoking and the use of e-cigarettes **ARE NOT** allowed in the school grounds.

Inhalers and medication

Please ensure if your child suffers from asthma that you bring a pharmacy labelled inhaler and spacer to be kept in school office.

We have staff who have been trained to give medicines in school. They will give antibiotics to children who have them prescribed by the doctor. You must come into the school office and complete a permission form. The person collecting your child is responsible for collecting the medication from the school at the end of the day.

If you have given permission for your child to be given Calpol we will endeavour to contact you before administering it. You will receive a note home stating dosage and time the Calpol has been given.



Lunchtime and special School lunches

This year we have made a small change to lunchtimes, Early years children are now having their lunch break between 11.45-12.30pm and Year 1 and 2 are having their lunch between 12.15-1.00pm. This means we can make the time in the hall run more smoothly and be calmer and quieter and as the lunchtime play is a little shorter we can make sure it is happier and more productive. So far the changes are going very well and having a positive effect for everyone.

Each term we have special event lunches organised jointly with HC3S. These might be a Pizza Party, Fish & Chips takeaway or a harvest or Christmas lunch. Information will be sent home prior to the meal. A meal will **automatically be ordered** for your child unless you either return the form or email the office to let them know you will be providing a lunch from home.

Friends

The Friends will be holding a meeting on **Tuesday 26 September at 2.15 p.m.** at school. All are welcome. Don't forget to join the friends facebook page: **'Friends of Peel Common Infant and Nursery School'** to keep up to date with fundraising and other events.

Making Payments

- ▶ Payments can be made via Tucasi for book bags, water bottles and school trips. If you have not signed up and wish to do so please contact the school office for further information. This system makes life easier for both you and us.



Charities

We like to support a few charities over the year, those planned so far include:-
Our ongoing sponsorship of Om through Action Aid- we will be having an Action Aid Day on Wednesday 20 September with odd sock day,
Children in Need on 17 November
Our local food bank at Harvest- at our Harvest assemblies on 10 and 11 October
MacMillan cancer support- through a coffee afternoon on 29 September

Look out for more information on the things that are planned.

Woodpeckers

Our popular afterschool club now also runs a breakfast club at the Infant School. This is in addition to the breakfast club which still runs at the Junior school.

Please see the woodpeckers website (<http://woodpeckerschildcare.co.uk/>) for more details or pop in before or after school if you would like to see what the club looks like and talk to the manager Mrs O'Leary.



Look out for more details about our maths week at the end of this term.
(16 -20 October)

There will be special activities planned for the children and a showcase event for parents on Friday 20th October.

Dates for your diaries

| | |
|-----------------|---|
| 20 September | Action Aid day |
| 29 September | Macmillan Coffee afternoon |
| 5 October | Special school lunch—Pizza party |
| 10 & 11 October | Harvest Assemblies |
| 16 October | Individual Photographs |
| w/c 16 October | Maths Week |
| 20 October | Maths sharing event |
| w/c 23 October | Half Term |
| 30 October | Day closure for nursery & school |
| 6 November | Appointment Boards for Early Years Parent Evening |
| 7 November | John Snowden—family photographs |
| w/c 13 November | Early Years Parent Evenings |
| 14 November | Year 2 Winchester Science Centre visit |
| 17 November | Children in Need |
| 20 November | Appointment Boards for KS1 Parent Evening |
| w/c 20 November | Switch off fortnight |
| 22 November | Flu injections YR, Y1 and Y2 |
| w/c 27 November | KS1 Parents Evening |
| 12 December | PM Puppet Man |
| 15 December | Christmas Jumper Day |
| 19 December | Christmas lunch |
| 20 December | Christmas party |
| 21 December | Last day of term School ends at 1.30pm |
| 4 January | First day back Spring term |
| w/c 12 February | Half Term |
| 28 March | Last day of term for Easter |
| 29 March | Day closure for nursery & school |
| 16 April | First day back summer term |
| w/c 28 May | Half Term |
| 6 July | Day closure for nursery & school |
| 20 July | Last day of term for children School ends at 1.30pm |
| 23 July | Day closure for nursery & school |